

Item No.: 5A_Supp
Date of Meeting: April 3, 2018



West Seattle and Ballard Link Extensions

Northwest Seaport Alliance and Port of Seattle | 4.3.18



System expansion



System expansion

Sound Transit's system expansion means every few years new light rail, bus rapid transit and commuter rail stations open throughout the region, providing fast, reliable alternatives to congested roads.



soundtransit.org/system



Regional light rail expansion

By 2040: 116+ miles | 80+ stations | 16 cities connected

New approach to project development

- Enhance commitment to partnership, community engagement, collaboration, transparency and accountability
- Apply innovative ideas and lessons learned to streamline project delivery



A young man with glasses and a backpack is standing on a transit platform, smiling. He is holding a suitcase handle in his right hand and resting his left hand on a railing. The background shows a blurred transit station with tracks and overhead structures.

***West Seattle and Ballard
Link Extensions***



Representative project

- Identifies mode, corridor, station areas
- Informs cost, schedule, operating needs

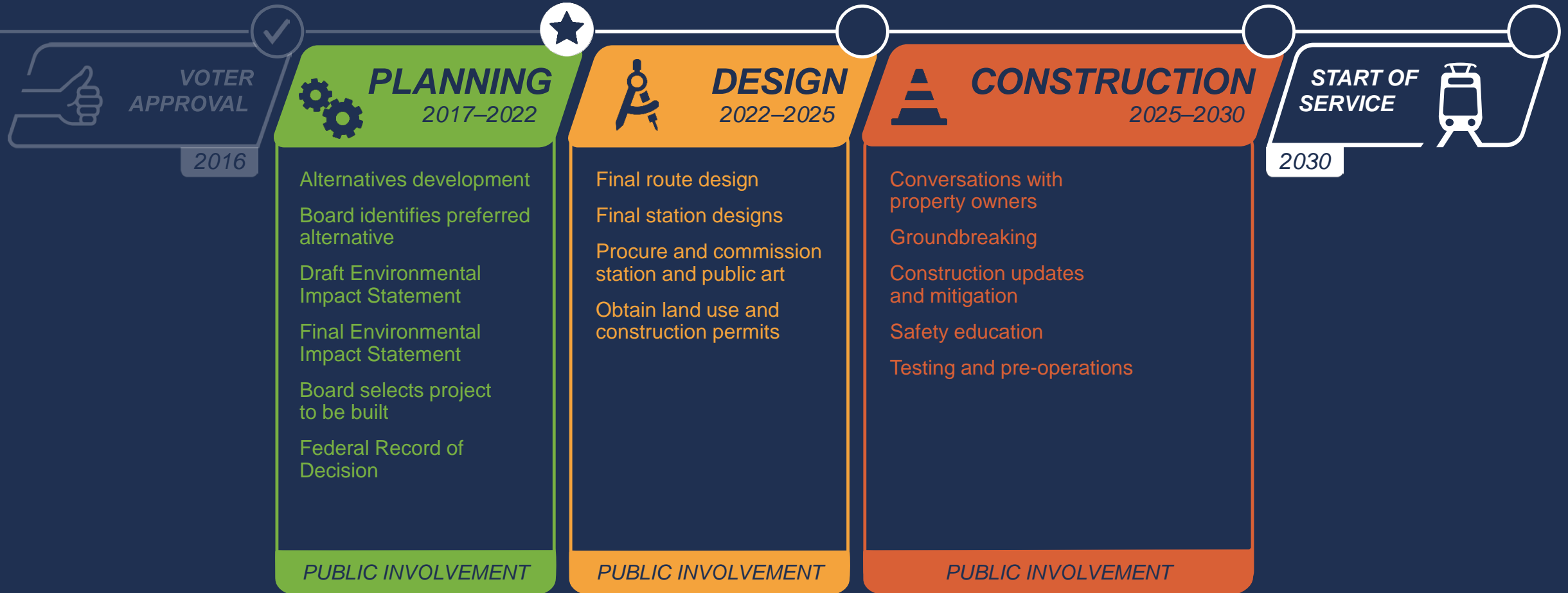
Project Flyover

Take a bird's-eye view tour of the representative project.

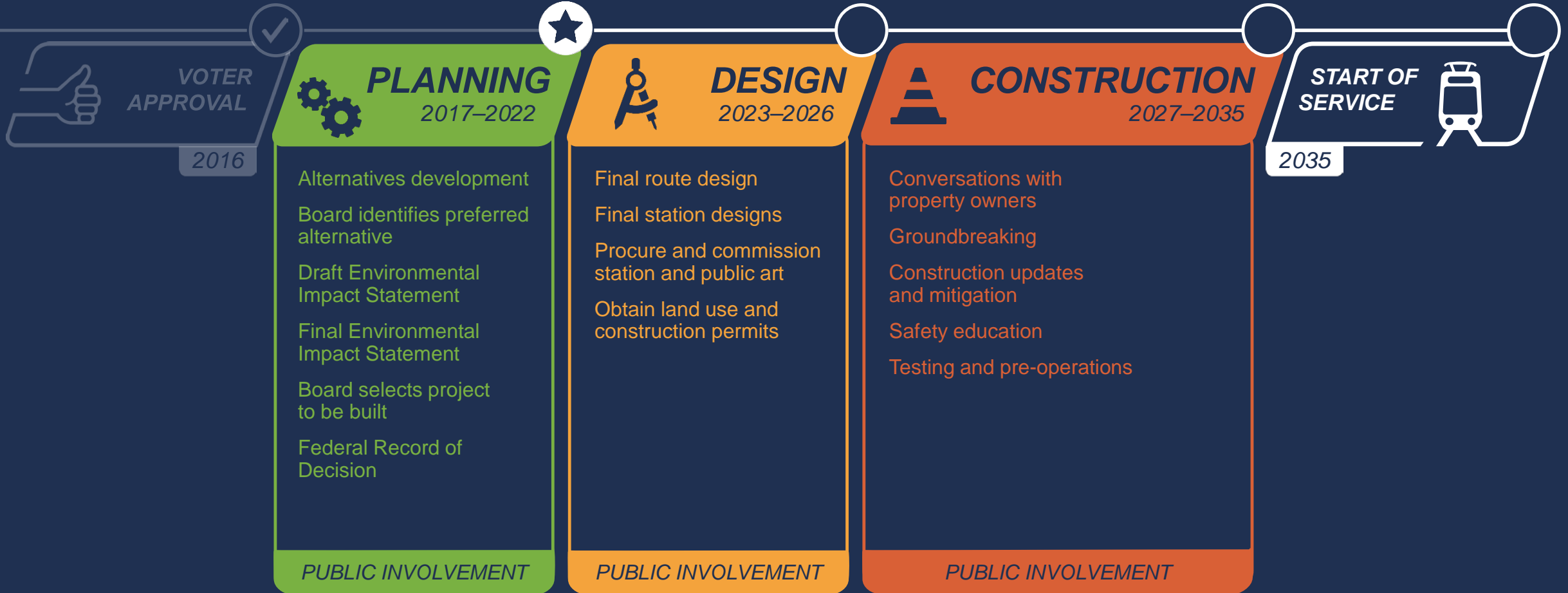
View Video:

<https://vimeo.com/255646896>

West Seattle project timeline



Ballard project timeline



A woman with curly hair and glasses is smiling and looking out a window. The background shows a playground with colorful equipment. The text "Alternatives development process" is overlaid on the image in a white, italicized font.

***Alternatives
development process***

VOTER
APPROVAL

2016



PLANNING



DESIGN

2017–2019

Alternatives
development

Board identifies
preferred alternative

2019–2022

Draft Environmental
Impact Statement

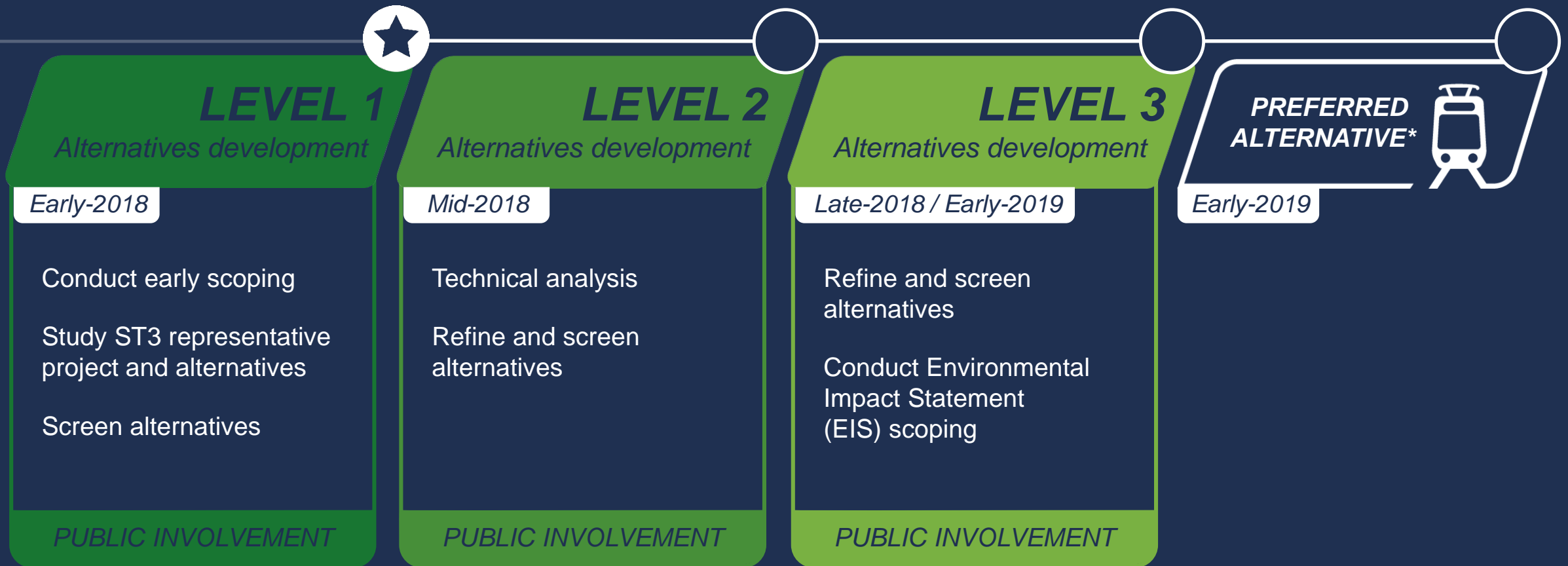
Final Environmental
Impact Statement

Board selects project
to be built

Federal Record of
Decision

PUBLIC INVOLVEMENT

Alternatives development process



*The Sound Transit Board identifies preferred alternatives and other alternatives to study.

Community engagement and collaboration



Community Updates



Neighborhood Forums



Stakeholder Advisory Group



Elected Leadership Group



Sound Transit Board



Meeting dates subject to change.

A light rail train is stopped at a station platform. The train is white with blue and green decorative patterns. Several people are on the platform, some boarding the train. A man in a dark shirt is entering the train through an open door. A woman in a pink top and black pants is walking towards the train. A man in a grey shirt and khaki pants is walking away from the train. A woman in a white top and light blue pants is walking towards the train. In the background, there are buildings, trees, and a blue sign with a white train icon. The text "What we heard during early scoping" is overlaid in white, italicized font.

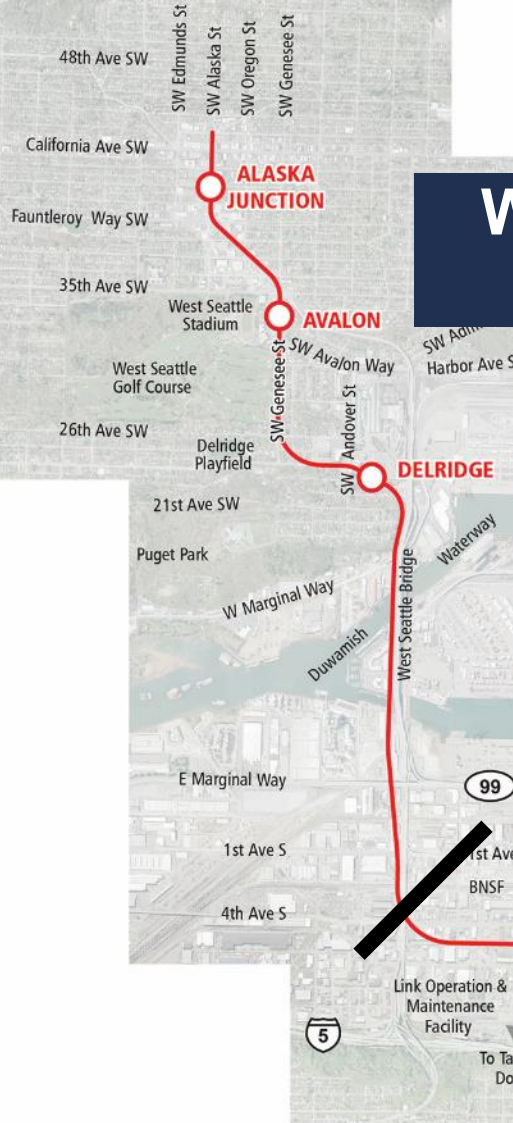
***What we heard during
early scoping***



Highlights

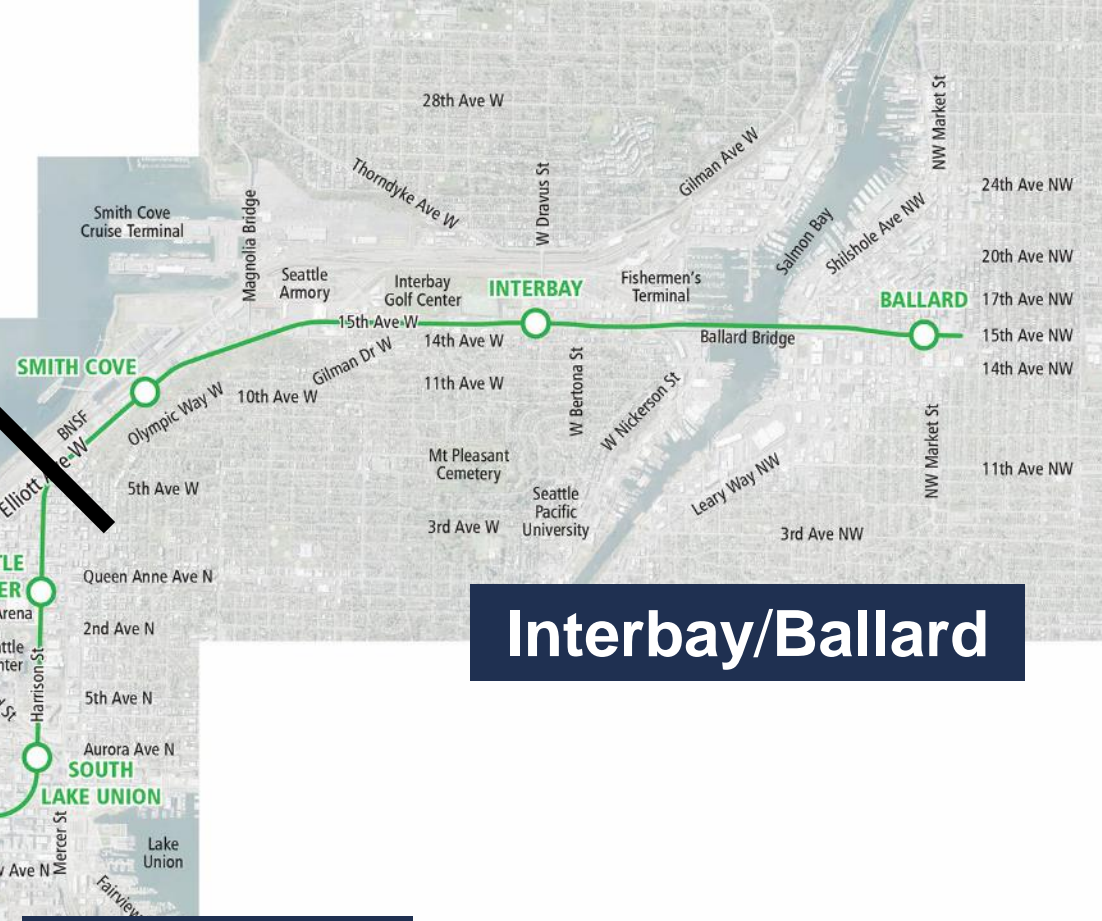
- 700+ people attended three public meetings
- 5,000+ visited online open house
- 8 agencies and Muckleshoot Tribe participated in agency meeting
- 2,800+ total comments received via meetings and other methods
- All comments will be captured in *Early Scoping Summary Report*

West Seattle/ Duwamish



SODO

Interbay/Ballard

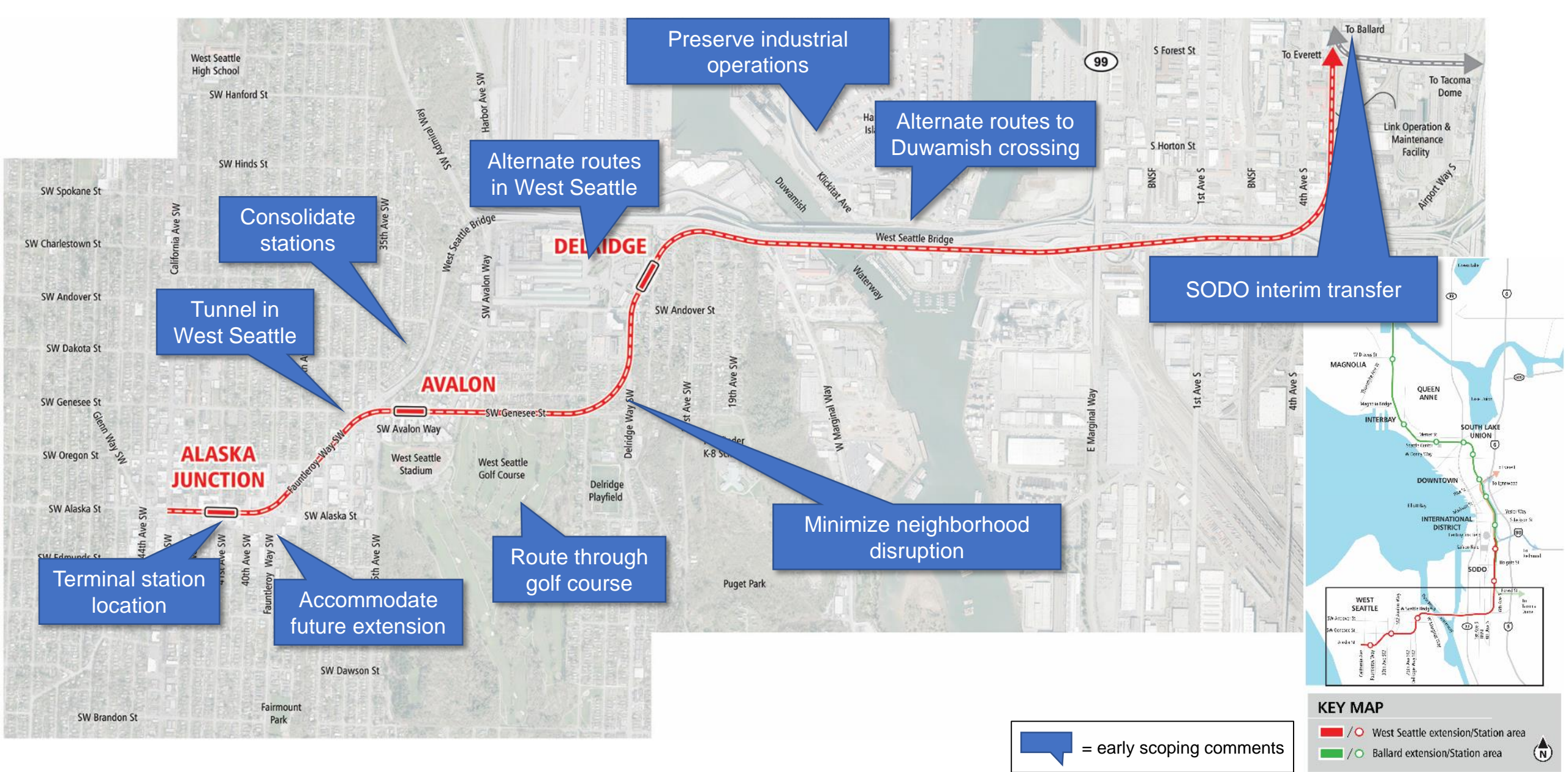


Downtown

KEY MAP

- / ○ West Seattle extension/Station area
- / ○ Ballard extension/Station area
- / ○ Existing Link/Station area

ST3 Representative project

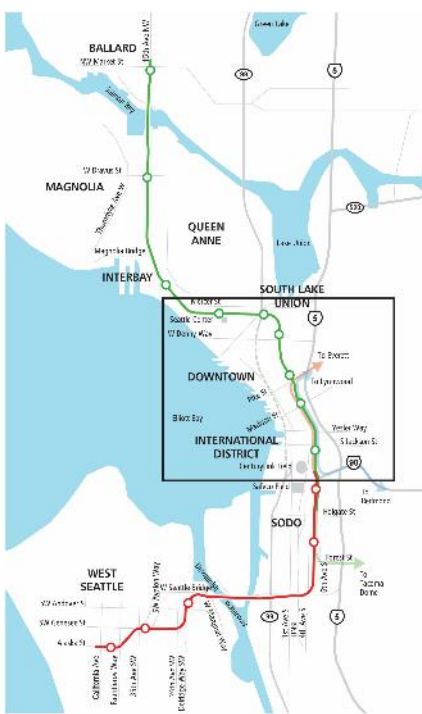


West Seattle/Duwamish



KEY MAP
 Red line/circle: West Seattle extension/Station area
 Green line/circle: Ballard extension/Station area

= early scoping comments



Ensure good connections between stations

Ensure good connections between stations

Move Midtown Station to First Hill

Move Denny Station east

Space stations farther apart

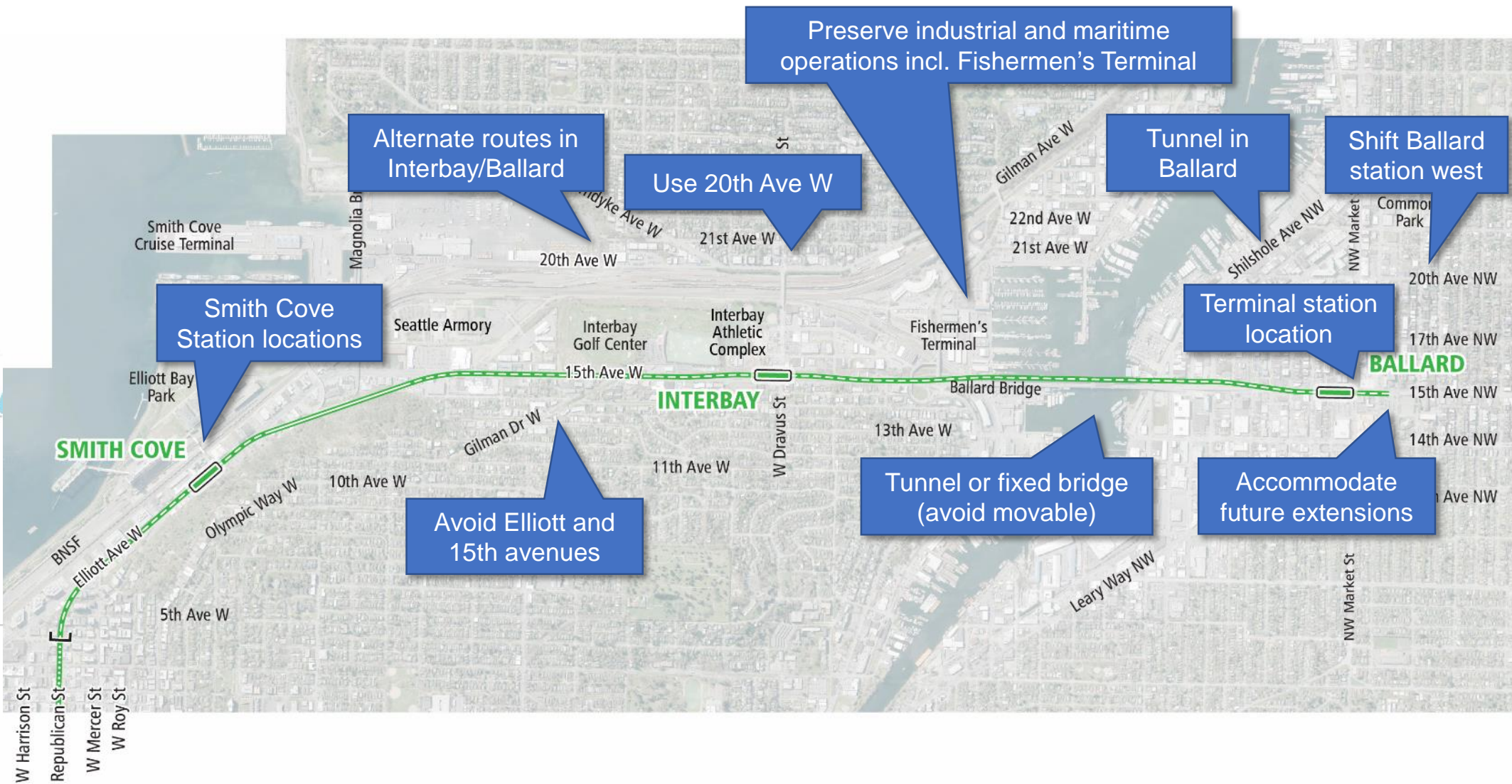
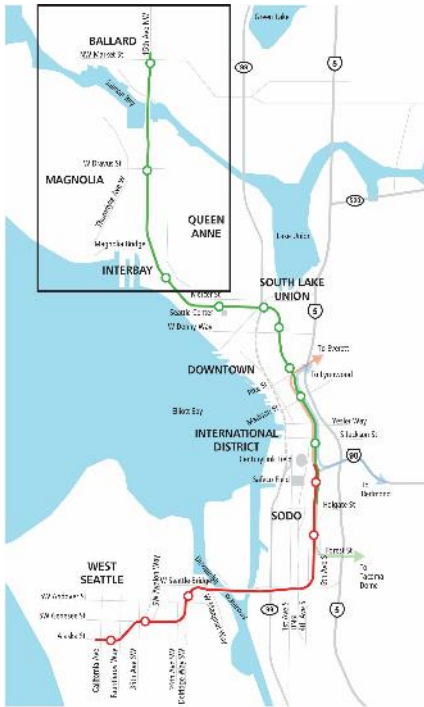
Consolidate stations

Connect to renovated arena

= early scoping comments

KEY MAP
 Red line: West Seattle extension/Station area
 Green line: Ballard extension/Station area

Downtown



KEY MAP

- Red line / circle: West Seattle extension/Station area
- Green line / circle: Ballard extension/Station area

= early scoping comments

Interbay/Ballard

A light rail train is stopped at a station platform. Several people are visible: one man is entering the train through an open door, while a group of people, including a woman with a pink top and a man in a grey shirt, are walking along the platform. The background shows a city street with buildings and a blue sign with a train icon. The entire image has a blue overlay.

Interagency coordination

Agency coordination

 Interagency Group Meetings

 Agency and Stakeholder Workshops

 Station Charrettes

 POS and NWSA Meetings



Meeting dates subject to change.

Agency coordination

- Monthly **Interagency Group** meetings
- Upcoming **Agency Workshops** on stations (March/April) and water crossings
- Planning summer **Station Charrettes**
- Regular **meetings** to discuss key concerns (impacts to facilities, freight/maritime interests)

wsblink@soundtransit.org
206-903-7229

soundtransit.org/wsblink 

