

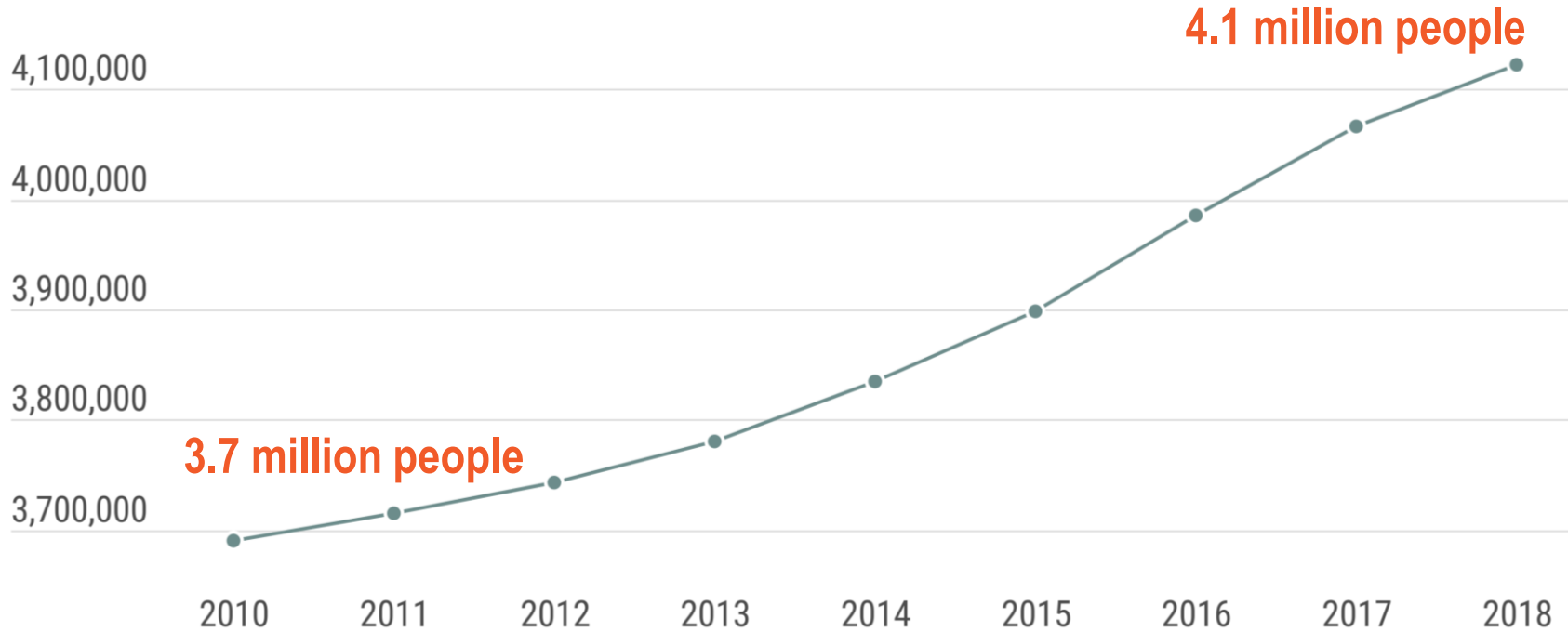
Regional Aviation Baseline Study

Highline Forum • November 28, 2018

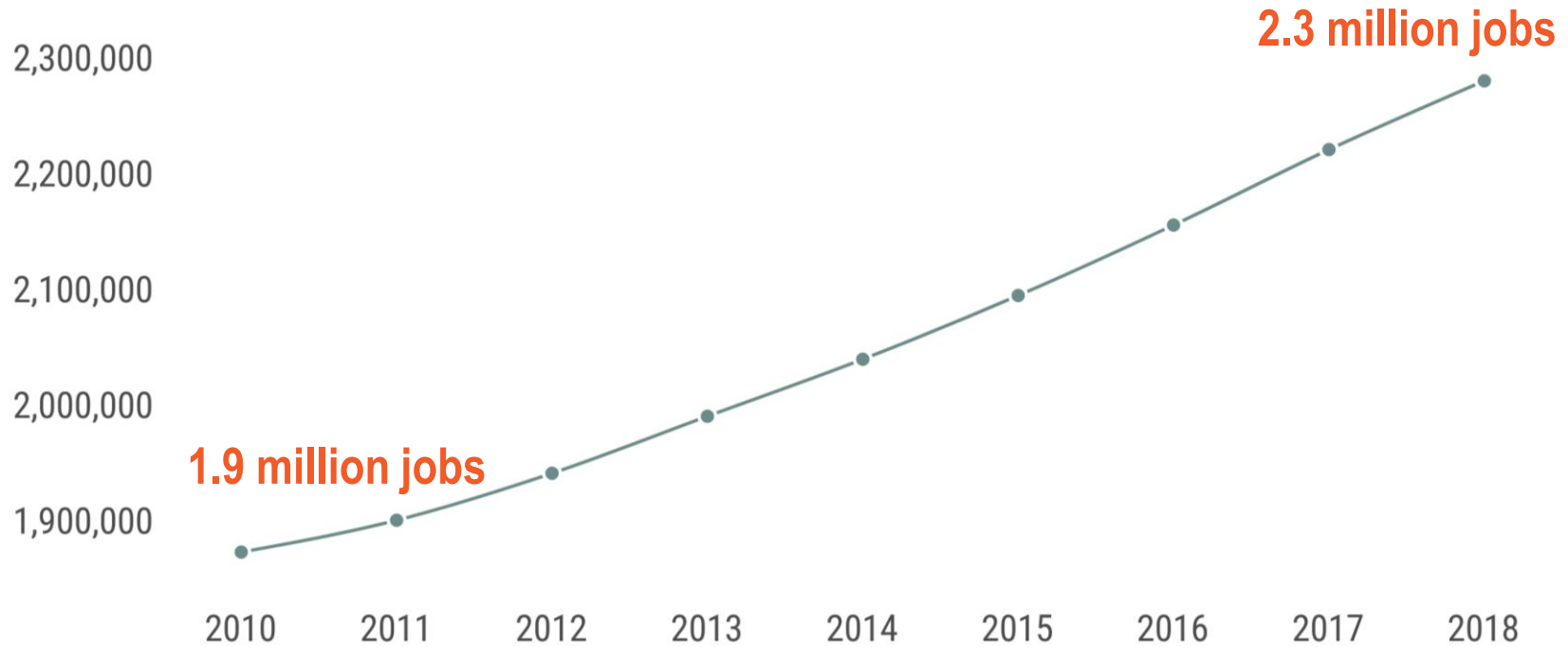


Puget Sound Regional Council

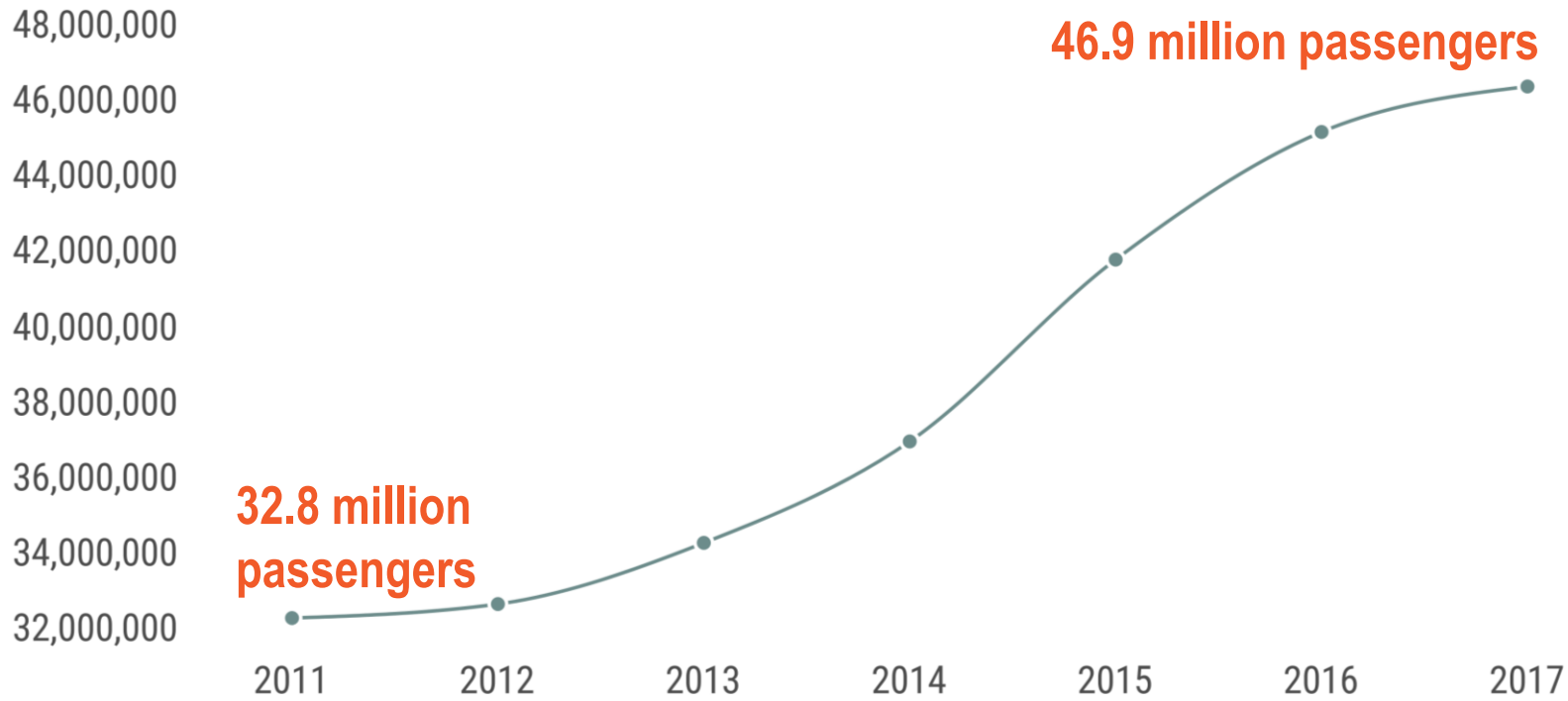
The central Puget Sound region is booming



Jobs and a strong economy generate growth



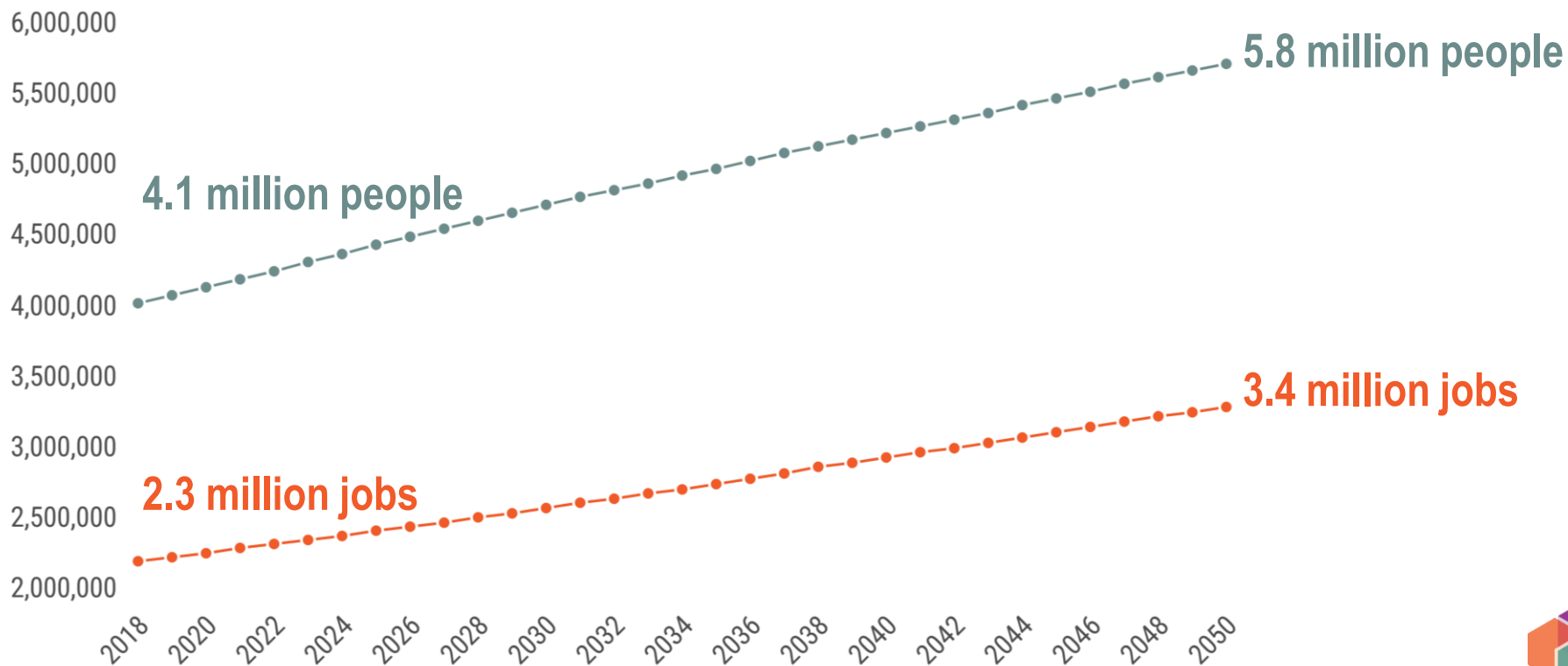
Aviation demand – SeaTac passenger volumes



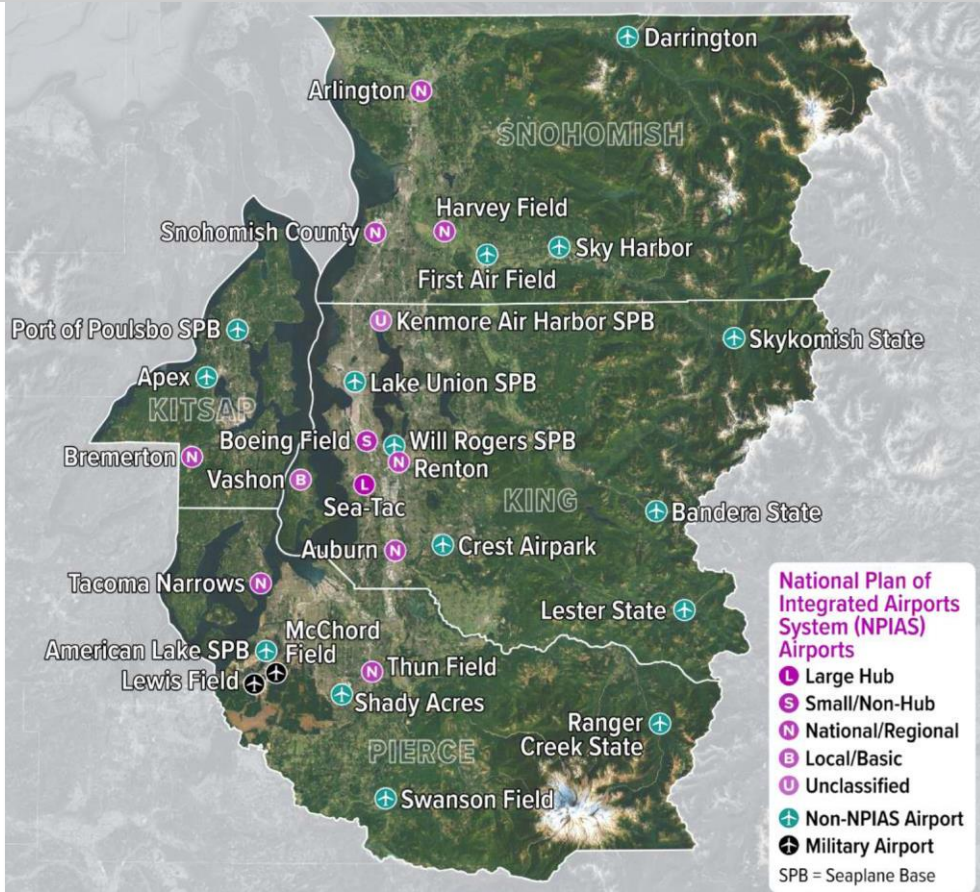
PSRC's role in the region



Getting ready for 2050



29 airports in the central Puget Sound region



- 3 commercial service and air cargo airports (SEA, BFI, and PAE)
- 3 industrial airports supporting aerospace manufacturing
- 5 seaplane bases
- 2 military airports
- Multiple general aviation facilities



Air passenger service – SeaTac



Air passenger service – Paine Field



Air cargo



Aerospace manufacturing – Boeing Field



Aerospace manufacturing – Paine Field



Aerospace manufacturing – Renton



Military needs – Joint Base Lewis-McChord



Military needs – Naval Air Station Whidbey Island



Regional Aviation Baseline Study

- Build off of master planning efforts at the region's airports
- Along with demand and capacity analysis, provide community perspectives
- Not a siting study!
- Prepare regional and state leaders for the next phase of planning
- Study overseen by PSRC's Executive Board





Josh Brown
jbrown@psrc.org

Thank you

