

RESOLUTION NO. 3601

A RESOLUTION of the Port Commission of the Port of Seattle Amending Unit 20 of the Comprehensive Scheme of Harbor Improvements of the Port of Seattle (Lower Duwamish Industrial Development District) by: (i) Declaring Certain Real and Personal Property (commonly known as Pier 48) Surplus and No Longer Needed for Port District Purposes; (ii) Authorizing Its Sale to the State of Washington Department of Transportation; and (iii) Deleting said Property from Unit 20 of the Comprehensive Scheme.

WHEREAS, the original Comprehensive Scheme of Harbor Improvements of the Port of Seattle was fixed in Resolution No. 17 of the Port Commission and was ratified by the qualified electors of the Port District at a special election held therein on March 5, 1912; and

WHEREAS, Unit 20 of the Comprehensive Scheme – the Lower Duwamish Industrial Development District (the “LDIDD”) was initially created by Port Commission adoption of Resolution No. 2769 on May 27, 1980; and

WHEREAS, the boundaries of said Unit 20 were subsequently revised and restated by Port Commission adoption of Resolution No. 2805 on February 10, 1981, as subsequently amended; and

WHEREAS, an official public hearing was held July 8, 2008, after notice of such hearing was duly published as provided by law, the question as to whether said Unit 20 of the Comprehensive Scheme should be amended to provide for that the property legally described below and commonly known as Pier 48, be declared surplus to Port of Seattle needs and no longer needed for Port purposes, authorize its sale to the State of Washington Department of Transportation, and delete it from Unit 20 of the Comprehensive Scheme; and

WHEREAS, the Port of Seattle Commission has heard from all persons desiring to speak at said public hearing with regard to the proposed amendment and modification to Unit 20, including without limitation the environmental aspects of such amendment and modification; and

WHEREAS, the members of the Port of Seattle Commission at said public hearing viewed maps, plans, and other data regarding the property proposed for sale, which maps, plans, and other data are on file in the office of the Port of Seattle Commission; and

WHEREAS, the members of the Port of Seattle Commission have discussed and considered the proposed amendment to Unit 20 of the Comprehensive Scheme in light of all comments by members of the public at the public hearing;

NOW, THEREFORE, BE IT RESOLVED by the Port Commission of the Port of Seattle as follows:

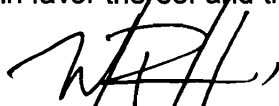
Section 1. The real property shown on attached Exhibits A - 1 and A - 2 and legally described as follows, and all improvements thereon, and which is part of Unit 20 of the

Comprehensive Scheme is hereby declared surplus to Port of Seattle needs and no longer needed for Port purposes and deleted from Unit 20 of the Comprehensive Scheme:

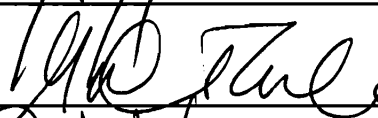
Lots 1 through 9, inclusive, Block 199, Seattle Tide Lands, as shown on the official maps on file in the Office of the Commissioner of Public Lands at Olympia, Washington, EXCEPT any portion within vacated South Jackson Street.

Section 2. Port staff is authorized to take all necessary steps to arrange for the sale of said property and to execute all documents necessary to accomplish its sale to the State of Washington Department of Transportation, in accordance with state law. The Property described above has a market value of \$ 11,000,000.00.


ADOPTED by the Port Commission of the Port of Seattle at a regular meeting held this 22nd day of July, 2008, and duly authenticated in open session by the signatures of the Commissioners voting in favor thereof and the seal of the Commission.



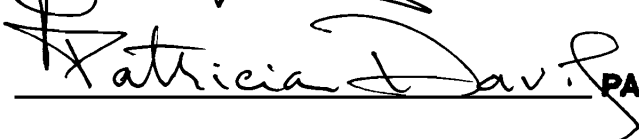
BILL BRYANT



Gael TARLETON



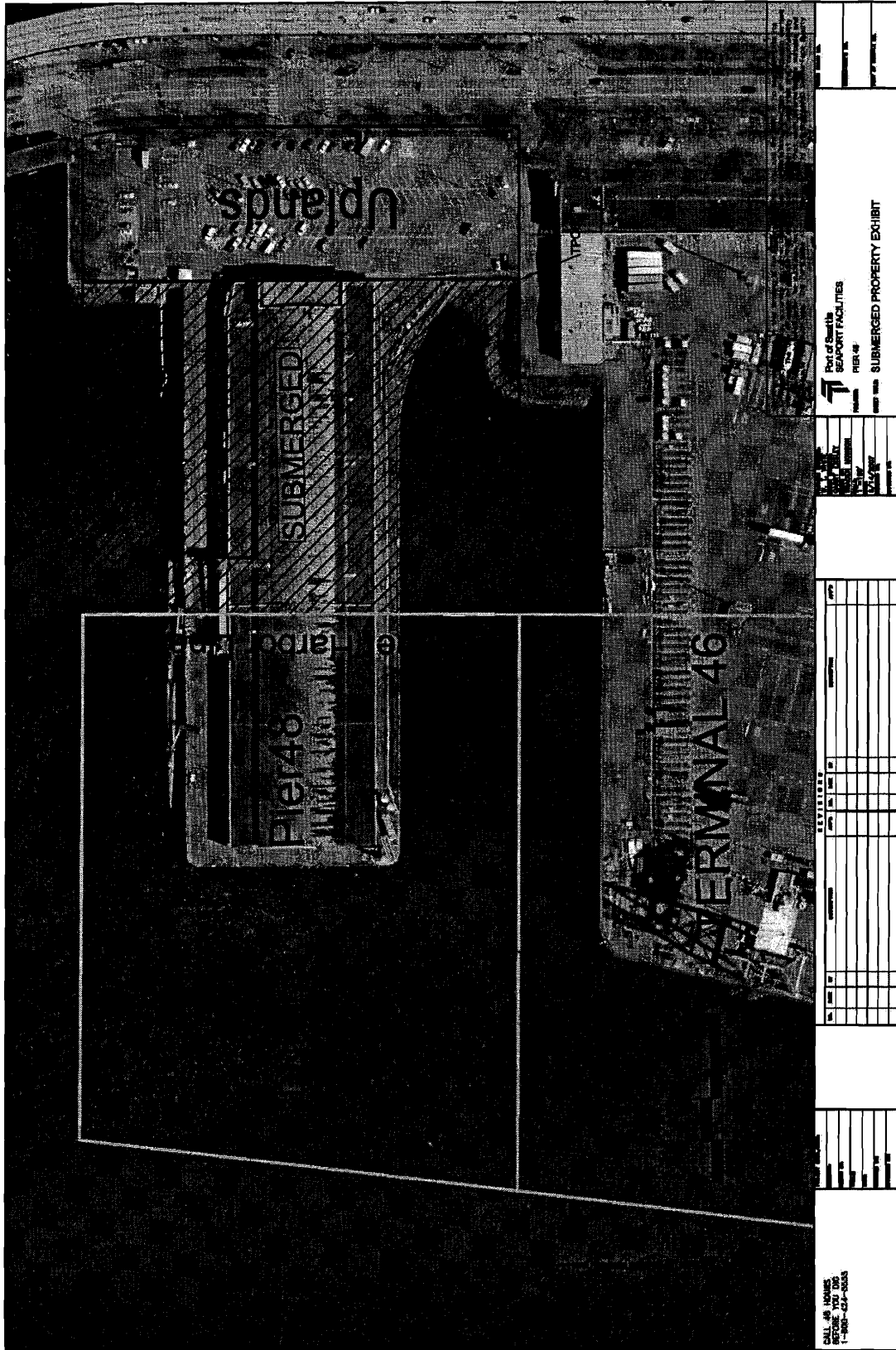
JOHN CREIGHTON

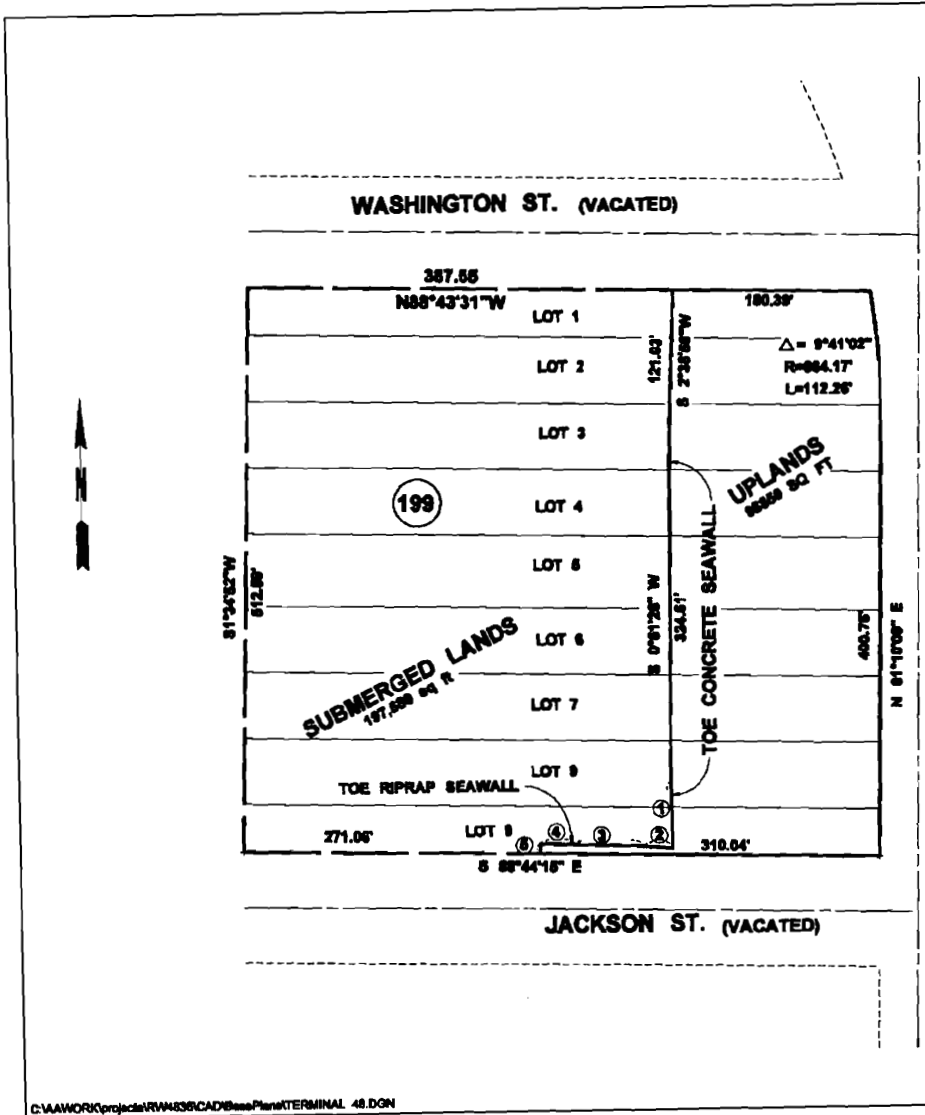


PATRICIA DAVIS

Port Commission

Exhibit A-1
Resolution No. 3601





**SKETCH OF BLOCK 199
SEATTLE TIDELANDS**
TIDELANDS IN THE NE 1/4 SECTION 6,
T. 24 N., R. 4 E., WM
KING COUNTY, WASHINGTON

BASIS OF BEARINGS: AFN 20040428900001
SCALE: 1"=100' APRIL 4, 2008



LINE	BEARING	DISTANCE
1	S 01°05'05" E	01.03'
2	N 04°42'34" E	26.84'
3	N 07°08'18" E	88.42'
4	N 07°08'18" E	29.25'
5	S 00°11'08" E	0.10'



Exhibit A-2
Resolution No. 3601