

We only use cookies that are necessary for this site to function, and to provide you with the best experience. Learn more in our [Cookie Statement](#). By continuing to use this site, you consent to the use of cookies.

Subscribe to updates from Port of Seattle

Nuts + Bolts: See what's new in SEA Airport construction

Email Address

Share Bulletin

Port of Seattle Washington sent this bulletin at 03/04/2020 08:00 AM PST



Having trouble viewing this email? [View it as a plain text page.](#)

SEA
Seattle-Tacoma
International
Airport

Nuts & Bolts

1st Quarter 2020

Elevating Every Day at SEA

Celebrating the Spirit of the Region

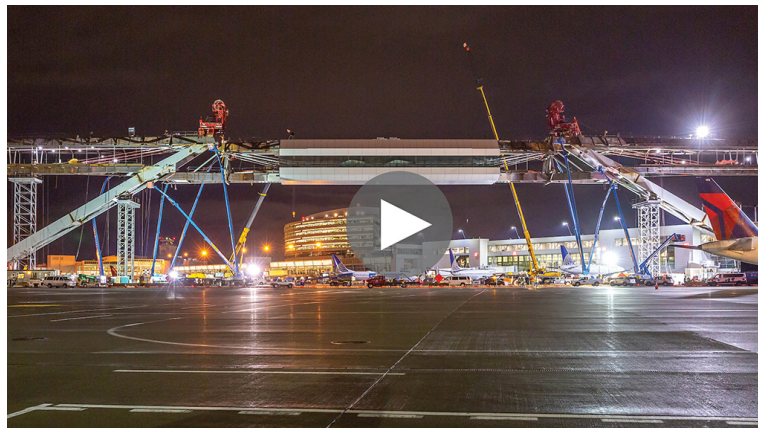


Seattle-Tacoma International Airport (SEA) is bullish on the monumental year and decade. We're improving the passenger experience, expanding economic opportunity, and emphasizing sustainability as we serve a fast-growing region.

To usher in a new era of customer-centered travel, in January we introduced a new [SEA Airport brand identity](#) and a suite of customer-centered improvements. Our reinvented quarterly construction newsletter gives an inside look at the one-million square feet being built or updated at SEA.

International Arrivals Facility

Bridge to the World Lifts into Place



In January, thanks to around-the-clock work by more than 100 team members, ironworkers and welders, and specialty trades, SEA achieved a major milestone for the [International Arrivals Facility \(IAF\)](#).

The 320-foot center span traveled nearly three miles down SEA's closed center runway, followed by a complex lift and installation sequence between Concourse A and the South Satellite. Workers installed the walkway's center span and tested 16 key welds before the four strand jacks could be removed and the taxilane could be re-opened. SEA is now home to the world's longest elevated walkway over an active taxilane in the world.

Apprenticeship is a major workforce development strategy in the construction industry, and the IAF continues to exceed its apprentice utilization requirements. At the end of 2019, 20.1 percent (or 282,889 hours) of all IAF labor hours were worked by apprentices with 32.6 percent of those apprentice hours worked by minorities.

Looking Ahead: IAF landside elements within the 450,000 square-foot arrivals facility are tracking to completion. Bag claim devices, terrazzo flooring, and interior finishes continue to be installed.

Baggage Handling System Optimization

Automation Increases Efficiency and Energy Savings



As phase one of the [Baggage Handling System Optimization project](#) nears completion, the SEA team is training airline, airport, and Transportation Security Administration (TSA) staff with the new system before the March launch. The first phase focused on installing a new centralized screening system to meet federal safety and security requirements, while ensuring reliability, flexibility, and efficiency for airlines and passengers.

The first eight Explosive Detection Screening (EDS) machines provided by TSA were installed to scan and analyze contents of checked baggage at a rate of approximately 700 bags an hour per machine. The new Checked Baggage Resolution Area improves work station ergonomics for TSA staff. The optimized system also introduces energy management controls featuring conveyors that run on-demand to save energy when not in use. If there's a jam, the system will automatically re-route bags by closing the impacted zone to keep the rest of the system moving.

These improvements will get travelers on their way. In 2019, SEA served 51.8 million passengers and processed over 43,000 outbound bags on its busiest day. When complete, this optimized system will screen and move more checked bags with more efficiency and flexibility.

Looking Ahead: Phase two of this project is extremely complex with 64 sequencing steps and limited space for construction material storage. It also requires carefully-timed build periods to minimize impacts to live baggage operations.

North Satellite Modernization

'Seismic Hug' Extends Life of Aging Infrastructure



Construction crews working on the south end of the North Satellite are strengthening the existing 1970s structure by giving it a "seismic hug." Running along the outside perimeter of the building is a steel moment frame, which is a system of columns and beams connecting to concrete piles reaching down as deep as 125 feet. This structural approach allowed SEA to maintain airport operations at the North Satellite longer compared to replacing the entire structure. The project reinforces the renovated facility to withstand seismic activity and meet today's code.

As phase two work on the [North Satellite Modernization project](#) continues, the glass

paneled exterior (or curtain wall) of the future Central Marketplace is taking shape. The glass panels enveloping the facility improves the building's energy performance, brings in natural daylight for travelers, and provides a modern finish.

Looking Ahead: Upgrades to the station level of the North Satellite begin in mid-March and will impact service along the North Train Loop connecting Concourse C, the Main Terminal, and the North Satellite. SEA's satellite train system (STS) operates three-car trains. Station construction will begin at the south end of the train platform and will limit service to two operating cars on the North Train Loop. The upgraded station will feature new terrazzo flooring, architectural finishes, signage, and audio/visual technology matching the recently completed Concourse C station.

Central Terminal

HVAC Upgrades Improve Comfort and Energy Efficiency



Infrastructure upgrades in the [Central Terminal](#) have begun and will open 11,000 square feet of new space on the mezzanine level that will provide more food options for travelers and create more jobs in food concessions.

Heating, ventilation, and air conditioning (HVAC) are critical components of managing the balance of air flow in the space to ensure diners' comfort. Testing, modeling, and installation of new HVAC systems and ductwork in the mezzanine expansion is required to meet code and will also improve the building's energy performance. Temporary scaffolding provided crews access to the Central Terminal ceiling to complete this work and will be removed by March. Structural steel work along the rooftop mechanical penthouse is ongoing.

Looking Ahead: The new north elevator peeks above the barricades and will give travelers access to the future mezzanine level restaurant. This glass elevator will provide unobstructed views and more daylight in the renovated space. An internal staircase connecting the concourse and mezzanine levels is also underway as part of the Salty's at the SEA and Brewtop Social buildout.

Diversity in Contracting Tabor 100 Resource Hub Opens in Tukwila



Small, minority- and women-owned, and disadvantaged businesses have a place to gather and receive training and resources at the recently opened Tabor 100 Economic Development Hub in Tukwila. This resource center opened after years of hard work and support from agencies and organizations like the Port of Seattle. [Keep Reading →](#)

PortGen Workshop C1 Building Informational Meeting Draws Large Crowd



More than 120 attendees participated in the February 26 PortGen Workshop to learn about the C1 Building Project and network with potential prime proposers. With limited land and facility constraints between Concourses C and D at SEA, this project is an opportunity for vertical expansion to meet demand for dining and retail, tenant, and passenger needs.

Bid Opportunities Find Port Procurement and Contract Info at VendorConnect

[Read More ▶](#)

Learn About Upcoming Projects

PortGen Workshops give small, women- and minority-owned, and disadvantaged businesses interested in doing work at the Airport an opportunity to meet with Port staff, learn more about upcoming projects, and network. Register now!

- 3/27 – [Construction](#)
- 4/23 - [Consulting](#)
- 5/20 – [Aviation Division](#)



Copyright © 2020 All rights reserved | Port of Seattle | 2711 Alaskan Way | Seattle, WA 98121

Port of Seattle Commission

Stephanie Bowman | Ryan Calkins | Sam Cho | Fred Felleman | Peter Steinbrueck

Executive Director: Stephen P. Metruck

[unsubscribe from this list](#) | [update subscription preferences](#)

[Contact us](#) | [Visit our website](#)



Powered by



[Privacy Policy](#) | [Cookie Statement](#) | [Help](#)