

## Monthly Totals & Trends

**169**

Distinct Households

**8,327**

Comments

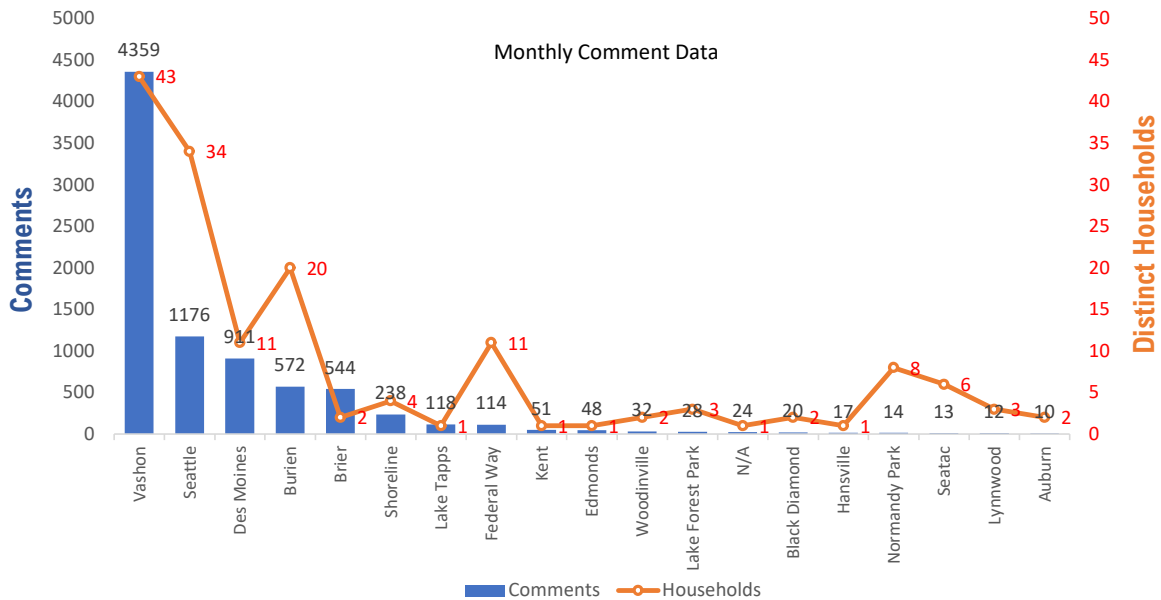
**210,146**

Comments YTD

**917**

Distinct Households YTD

## Monthly Totals & Trends: By City



| CITY             | COMMENTS     | DISTINCT HOUSEHOLDS | AVG COMMENTS/ HOUSEHOLD |
|------------------|--------------|---------------------|-------------------------|
| Vashon           | 4,359        | 43                  | 101.4                   |
| Seattle          | 1,176        | 34                  | 34.6                    |
| Des Moines       | 911          | 11                  | 82.8                    |
| Burien           | 572          | 20                  | 28.6                    |
| Brier            | 544          | 2                   | 272.0                   |
| Shoreline        | 238          | 4                   | 59.5                    |
| Lake Tapps       | 118          | 1                   | 118.0                   |
| Federal Way      | 114          | 11                  | 10.4                    |
| Kent             | 51           | 1                   | 51.0                    |
| Edmonds          | 48           | 1                   | 48.0                    |
| Woodinville      | 32           | 2                   | 16.0                    |
| Lake Forest Park | 28           | 3                   | 9.3                     |
| N/A              | 24           | 1                   | 24.0                    |
| Black Diamond    | 20           | 2                   | 10.0                    |
| Hansville        | 17           | 1                   | 17.0                    |
| Normandy Park    | 14           | 8                   | 1.8                     |
| Seatac           | 13           | 6                   | 2.2                     |
| Lynnwood         | 12           | 3                   | 4.0                     |
| Auburn           | 10           | 2                   | 5.0                     |
| Puyallup         | 7            | 1                   | 7.0                     |
| OTHER            | 19           | 12                  | 1.6                     |
| <b>Totals</b>    | <b>8,327</b> | <b>169</b>          | <b>49.3</b>             |

## Monthly Totals & Trends

**169**

Distinct Households

**8,327**

Comments

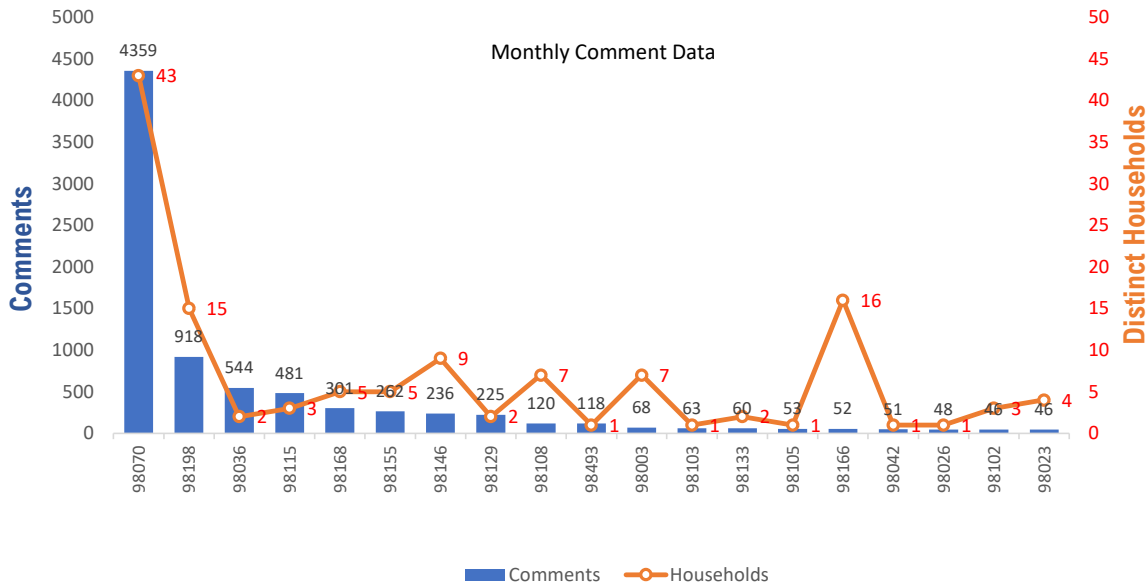
**210,146**

Comments YTD

**917**

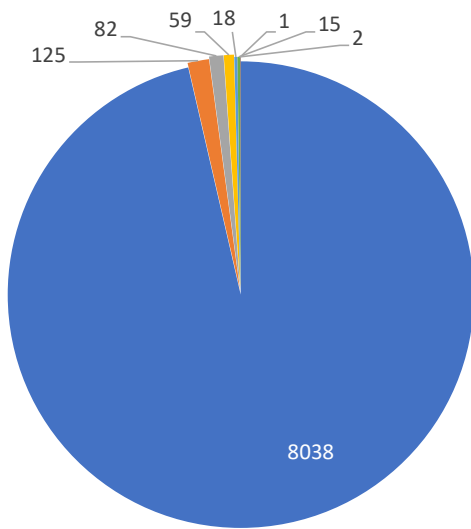
Distinct Households YTD

## Monthly Totals & Trends: By Zip Code



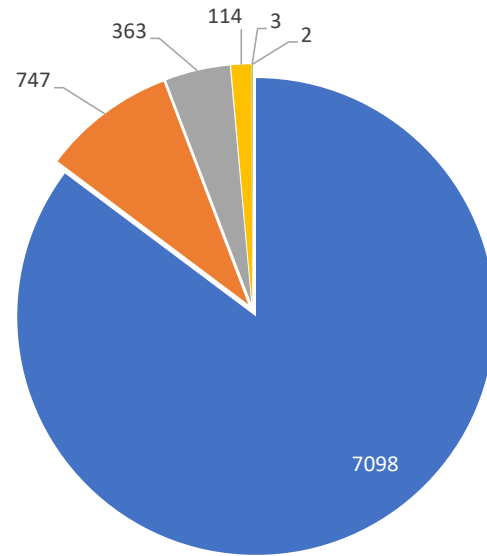
| ZIP CODE      | COMMENTS     | DISTINCT HOUSEHOLDS | AVG COMMENTS/HOUSEHOLD |
|---------------|--------------|---------------------|------------------------|
| 98070         | 4,359        | 43                  | 101.4                  |
| 98198         | 918          | 15                  | 61.2                   |
| 98003         | 68           | 7                   | 9.7                    |
| 98108         | 120          | 7                   | 17.1                   |
| 98146         | 236          | 9                   | 26.2                   |
| 98155         | 262          | 5                   | 52.4                   |
| 98166         | 52           | 16                  | 3.3                    |
| 98168         | 301          | 5                   | 60.2                   |
| 98115         | 481          | 3                   | 160.3                  |
| 98023         | 46           | 4                   | 11.5                   |
| 98144         | 45           | 3                   | 15.0                   |
| 98026         | 48           | 1                   | 48.0                   |
| 98036         | 544          | 2                   | 272.0                  |
| 98105         | 53           | 1                   | 53.0                   |
| 98102         | 46           | 3                   | 15.3                   |
| 98129         | 225          | 2                   | 112.5                  |
| 98133         | 60           | 2                   | 30.0                   |
| 98042         | 51           | 1                   | 51.0                   |
| 98103         | 63           | 1                   | 63.0                   |
| 98493         | 118          | 1                   | 118.0                  |
| OTHER         | 231          | 38                  | 6.1                    |
| <b>Totals</b> | <b>8,327</b> | <b>169</b>          | <b>49.3</b>            |

## Comment Breakdown: Types & Filing Method



- Noise Annoyance
- Increase in Flight / Noise
- Aircraft too low
- Unspecified
- Request Sound Insulation Info
- Aircraft deviations
- Fuel Smell / Air Quality
- Other

| COMMENT TYPE                  | COMMENTS |
|-------------------------------|----------|
| Noise Annoyance               | 8038     |
| Increase in Flight / Noise    | 125      |
| Aircraft too low              | 82       |
| Unspecified                   | 59       |
| Request Sound Insulation Info | 18       |
| Aircraft deviations           | 15       |
| Fuel Smell / Air Quality      | 2        |
| Other                         | 1        |



- Web App
- Mobile
- Webform
- Hotline
- MobileVue
- PublicVue

| METHOD RECEIVED | COUNT |
|-----------------|-------|
| Web App         | 7098  |
| Mobile          | 747   |
| Webform         | 363   |
| Hotline         | 114   |
| MobileVue       | 3     |
| PublicVue       | 2     |

**169**

Distinct Households

**8,327**

Comments

**210,146**

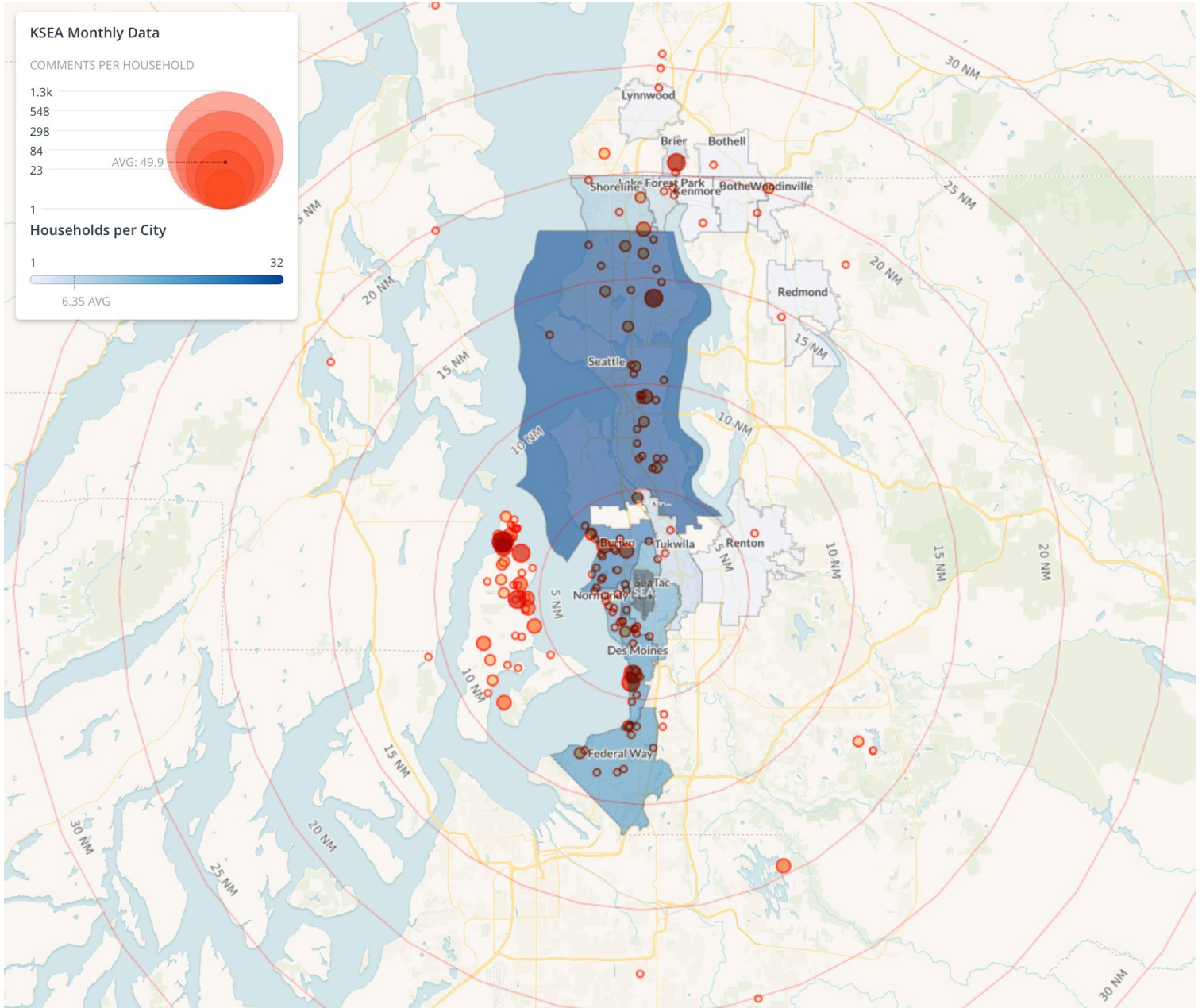
Comments YTD

**917**

Distinct Households YTD

## Noise Comment Map: By City

NOTES: Noise comments from households submitted without valid address information are not depicted on the map.



**169**

Distinct Households

**8,327**

Comments

**210,146**

Comments YTD

**917**

Distinct Households YTD

## Noise Comment Map: By Zip Code

NOTES: Noise comments from households submitted without valid address information are not depicted on the map.

