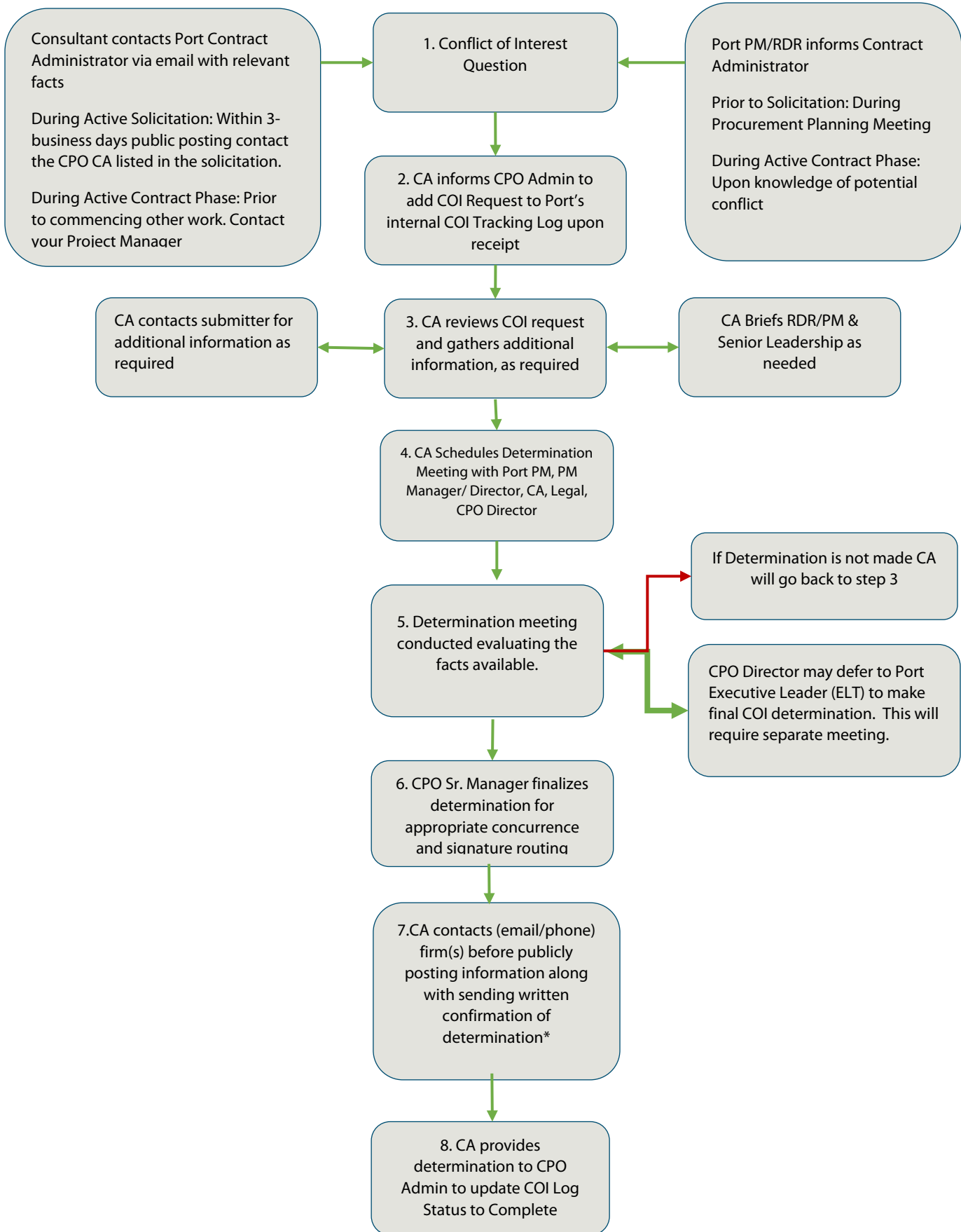


Conflict of Interest (COI) Determination Process Flow Chart



*A response will be provided within two (2) weeks/10 business days from submission date; however, a complex request may take longer to complete. The Port will notify you of the estimated time frame, if longer.

CA: Contract Administrator
 COI: Conflict of Interest
 DC: Diversity in Contracting Representative
 PM: Project Manager
 RDR: Requesting Department Representative