

## What is an Illicit Discharge?

According to federal and state laws, an illicit discharge is **any discharge to a municipal separate storm sewer system that is not made up entirely of rain water or snow melt** (i.e. stormwater) that causes a risk to human health and safety, land, or water.

### ANSWER:

**“ANYTHING THAT IS NOT RAIN”**



## Remember...

Illicit discharges on the Port's terminals, facilities, parking lots, roads, and storm drains **travel directly into our natural waterways**, such as Elliott Bay and the Duwamish Waterway. Water contaminated by illicit discharges that enters storm drains is not cleaned or treated at any point before entering the waterways, and can damage the environment, harm wildlife, and restrict recreational activities.

If you see illicit materials present in a surface water, storm drain, street, or ditch,  
**Please Report It! You Can Help!**

**Call the Maritime Operations Line  
To Report Illicit Discharges**

**206.787.3751**

## Report Illicit Discharges

Contact Maritime Operations  
24-Hour Line

**206.787.3751**

**\*\*If Spill is Hazardous—Also Call 911\*\***

Be prepared to provide the following information:

- Where is the discharge?
- What was released?
- How much was discharged?
- Who is responsible?
- Is anyone containing or cleaning up the discharge?

## Where can I go for more information?

For more information or to report illicit discharges please visit or contact:

### Port of Seattle —

<http://www.portseattle.org/Environmental/Water-Wetlands-Wildlife/Stormwater/Pages/Stormwater-FAQ's.aspx>

Marine Maintenance Dispatch: **206.787.3350**

### Washington Department of Ecology —

<http://www.ecy.wa.gov/programs/wq/stormwater/municipal/IDDEresources.html>

Northwest Region: 425.649.7000

### National Response Center —

Business: 800.424.8802

### WA Emergency Management Division —

Business: 800.258.5990

### Local Hazardous Waste Disposal —

Business: 206.263.8899

# Working To Protect Our Waterways

## Illicit Discharge Detection & Elimination (IDDE) Program



Port   
of Seattle

**PIERS 90 / 91 AND  
TERMINAL 91 UPLANDS**



## What are some common illicit discharges?

- Oil and oil absorbent (e.g. kitty litter)
- Antifreeze
- Paint
- Bird and animal waste
- Vehicle wash water
- Trash and garbage
- Soap, detergents, and other surfactants
- Gasoline and diesel
- Dirt and sediment



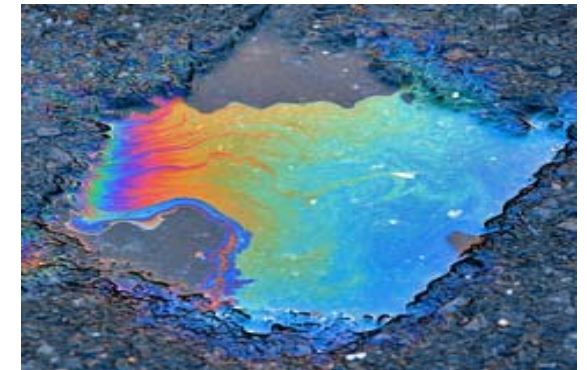
## How can I prevent illicit discharges from entering the Puget Sound?

- **Pick up** any debris or trash that may accumulate near surface waters or storm drains.
- **Store chemicals and other materials** under cover or indoors to protect from rain and snow. Use adequately sized secondary containment.
- **Maintain and cover** dumpsters to prevent leaks.
- **Clean up** absorbent materials after use.
- **Ensure** that your shop floor drain does not flow to stormwater system lines. If it does, discontinue use or reroute to sanitary sewer.
- **Do not** pour oil, antifreeze, paint, gasoline, cleaning products, sediment, soap, or wash water into surface waters, down storm drains, onto parking lots, or into drainage ditches. Take all of your wastes to the proper collection centers.
- **Do not** wash bird or animal wastes into surface waters or down storm drains.
- **Do not** dispose of landscaping waste (leaves, grass clippings, or mulch) into surface waters or down storm drains.
- **Do not** wash vehicles or equipment in areas that drain to surface waters or storm drains. Make use of vehicle wash pads or other methods to collect all wash water before it enters a storm drain.
- **Report illicit discharges!** Indicators of illicit discharge include: *odors* such as sewage or petroleum; red, green, brown, or yellow *colors* in water; opaque *cloudiness*; and/or *trash*, sewage, oil sheen, or soap suds.

## Port of Seattle IDDE Policy

In 2008, the Port of Seattle (Port) adopted a resolution to prohibit illicit discharges, connections, and dumping.

- **Illicit Discharge Policy:** Illicit discharges to surface water or the Port storm sewer system, whether direct or indirect, is either fully or conditionally prohibited.
- **Illicit Dumping Policy:** It is prohibited to spill, dump, release, throw, deposit, or place solid waste, litter, pet or yard waste, or hazardous materials on Port property without prior permission.
- **Illicit Connections Policy:** The construction, use, maintenance, or continued existence of illicit connections to the Port's storm sewer system is prohibited. This prohibition includes illicit connections made in the past, regardless of whether the connection was permissible under law at the time.



If you see illicit materials present in a surface water, storm drain, street, or ditch,  
**Please Report It! You Can Help!**

**Call the Maritime Operations Line  
 To Report Illicit Discharges**

**206.787.3751**